

# ULISSE EVO NEXT STAGE OF PTZ CAMERA EVOLUTION



EN

**UIDEOTECH**  
OUTDOOR VIDEO SECURITY

## WITNESS THE EVOLUTION OF OUTDOOR VIDEO SECURITY

**Videotec** is an Italian manufacturer operating in the security industry since 1986 and specialized in the design and creation of professional video surveillance products for outdoor environments.

### **FUTURE-PROOF TECHNOLOGY**

All product ranges offered are proudly "Made by Videotec" and, therefore, Videotec owns complete expertise for all of its products with total control over mechanics, electronics, positioning, networking, software and firmware.

This gives a significant competitive advantage in meeting the needs of personalized solutions or integrations with third-party systems, with the guarantee of Videotec quality, cyber-security, reliability and future-proof technology.

### **OUR MISSION**

As a unique firm created with the aim of shaping and enhancing a select market, we strive relentlessly to boost our clients' growth and satisfaction by constantly making an effort to cultivate our teams' expertise, professionalism, and creativity. Thanks to our focus on client prosperity and well-being, we are all better off.

### **CERTIFIED QUALITY AS A COMPETITIVE ADVANTAGE**

Videotec is an ISO 9001:2015 & ISO 14001:2015 certified company.

### **DIFFERENTIATORS: 100% INTERNAL KNOW-HOW AND TECHNOLOGY**

Designed to be zero maintenance.

Durability: 3 Years warranty as a standard. Extended warranty available up to 5 years.

Variety of custom choices: Build the best product configuration for your specific application in house.

Certified products: From international industry standards and other environmental product testing.

Open standard integration: Contributing member of ONVIF Testing of VMS and third-party products.

Additional services: Factory/Site Acceptance Testing Videotec Technical Training.



# ULISSE EVO

## OUTDOOR ENDURANCE CAMERAS

### MATERIAL

unrivalled corrosion resistance, thanks to the special aluminum surface treatments and the techno-polymer used for their construction.



### WIPER

camera is standard equipped with a wiper. The optional washer system helps ensure a clear view in any environmental conditions.



### DIFFERENT TYPES OF CAMERA

2 types of full hd cameras with video analysis and dual vision cameras or wide choice of thermal cameras.



### EASY INSTALLATION

ULISSE EVO can be installed in different ways - even in the inverted position typical of the speed domes - using the large variety of brackets and adaptors available to satisfy every installation need.



### LED ILLUMINATORS

Optional LED illuminator provides clear detection of objects during night hours.

### CYBER SECURITY

Thanks to digitally signed firmware, password-restricted access, access control, centralised management of certificates and compliance with **ONVIF Security Service specifications**, Videotec guarantees that all its IP products will have the highest level of security during data transfer and device access. products will have the highest level of security during data transfer and device access.

### ACCESSORIES

Brackets are also available with quick connectors for Ethernet/PoE, power and I/O, available wash pumps, communication boxes and other accessories.

OUTDOOR VIDEO SECURITY

## PTZ CAMERA WITH HIGH PERFORMANCE AND EXTREME RELIABILITY

The PTZ ULISSE EVO video camera is ideal as a video surveillance solution for outdoor applications in urban centres, critical infrastructures, traffic and railways. It is designed to guarantee total reliability and continuous operations in the most challenging outdoor environments. It is ultra resistant to corrosion and can withstand a wide temperature range (from -40°C to +65°C). The extra-sturdy structure is guaranteed by IK10, IP66/IP67/IP68, NEMA TYPE 4X and TYPE 6P protection ratings. Exceptional wind resistance up to 230km/h with PTZ moving at maximum speed.

ULISSE EVO has obtained Lloyd's Register Marine Type Approval for the maritime and shipping sector and complies with the standard for railway applications.

The modern, linear design of ULISSE EVO combines maximum strength and operational reliability with greatly reduced weight. This means easy and quick assembly and therefore lower installation costs and zero maintenance. It can even be mounted upside down, in the typical speed domes position. The supports can be supplied with quick-fit connectors for Ethernet/PoE, power supply and I/O.

This means the unit can be replaced quickly and easily in case of on-site intervention.



### APPLICATIONS

- Airports
- Highways
- Railways and Stations
- City Surveillance
- Critical Infrastructure
- Stadium
- Parking lots
- Bridges
- Tunnel
- Underground
- Substations
- Perimetral control

OUTDOOR VIDEO SECURITY



# ULISSE EVO

OPTICS PACKAGE



1. HIGHWAYS



2. STADIUMS



3. RAILWAYS AND STATIONS



4. PERIMETER



5. INDUSTRY PLANTS



6. PARKING LOTS



7. AIRPORTS



8. BRIDGES



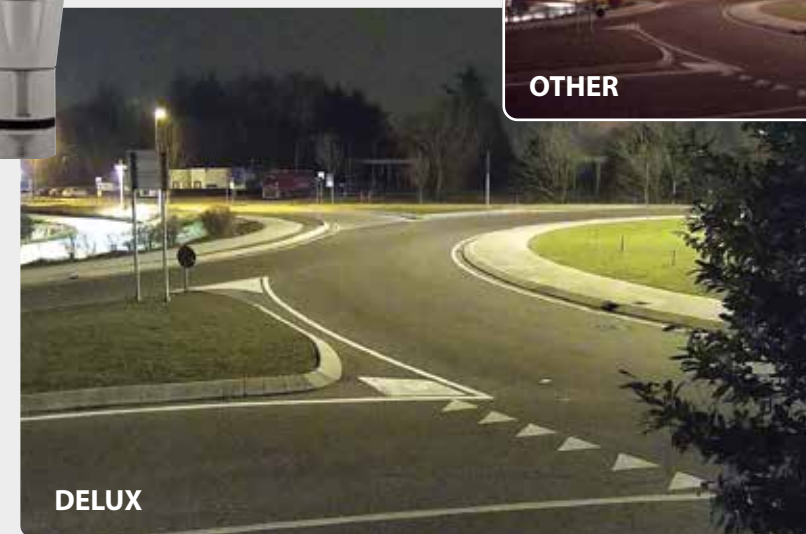
9. CITY SURVEILLANCE

## ULISSE EVO DELUX CAMERA

The IP Super low-light FullHD 1080p video camera and Delux technology offer unparalleled brightness and provide video footage with clear details and bright colours both during the day and at night.

**The powerful 30x optic zoom and the 60fps film speed allow you to accurately identify the details of an event,** including dynamic and rapidly changing scenes.

This PTZ camera provides 3 Full HD streams with H.264/Avc digital compression. It can be connected to an Ethernet network easily and can send video streams to digital monitors and storage systems. It complies with ONVIF, Profile T, Profile S and Profile Q protocols.

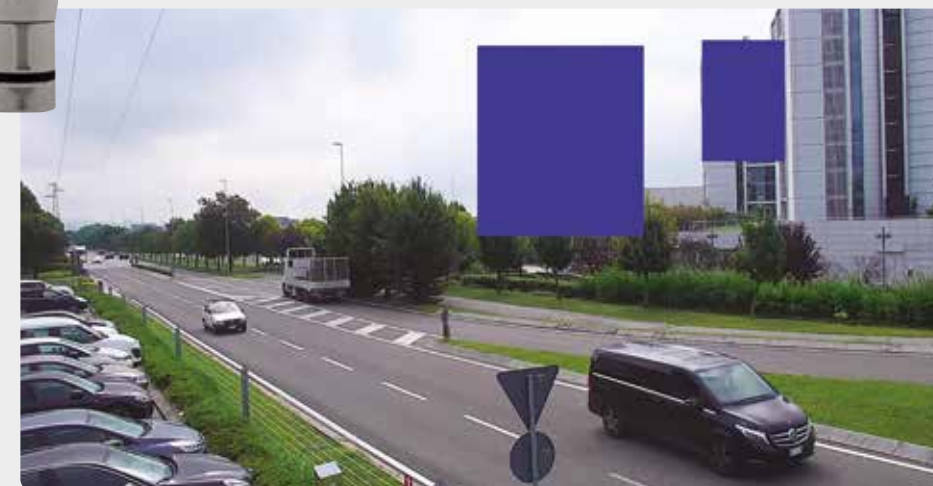


## ULISSE EVO SONY FCB-EV7520 CAMERA

ULISSE EVO with the SONY FCB-EV7520 camera has a 30x optical zoom and a 1/2.8" Exmor R™ CMOS sensor with Full HD 1080/60p resolution that produces the highest image quality.

**The image stabilization algorithm means even the smallest camera vibrations are detected and any blur in the footage is dynamically corrected.** This results in a sharp image of the scene being surveilled.

With ULISSE EVO and the SONY camera, you can set up to **24 dynamic privacy zone masks.** These masks change size based on the pan/tilt/zoom position so objects that shouldn't be seen remain hidden. The advanced SONY technology brings Wide Dynamic Range and a configurable High Light Compensation that allows optimal management of contrasting light and dark conditions.



## ULISSE EVO PERFORMANCE WITH LED ILLUMINATORS



Optional LED illuminator provides clear detection of objects during night hours.

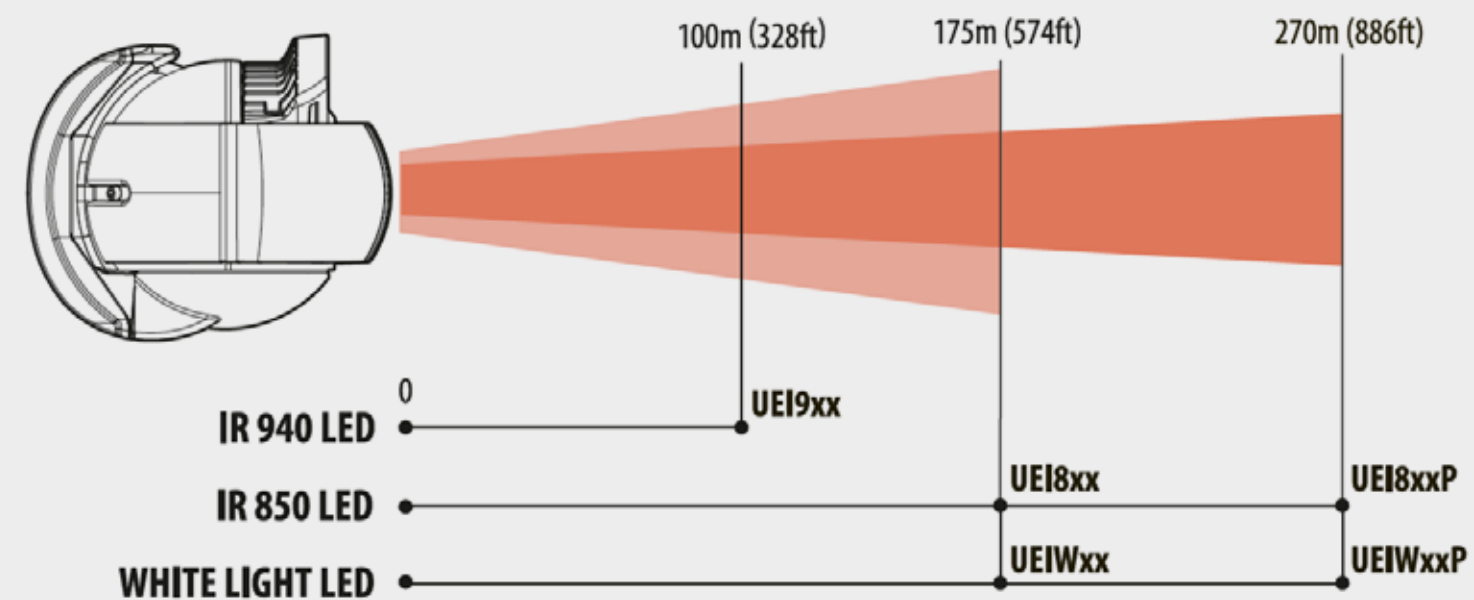
Illuminators are available with an ideal **light beam for long distances**, up to 270m, with infrared LEDs and **white light, to guarantee the perfect 24/24 coverage of perimeters and critical areas.**

For distances or up to 175m, our standard uniform-lighting illuminator

range guarantees even brightness in any PTZ zoom position and in any type of environment. This way, you will get optimal illumination of an area without over-exposure of nearby objects, thus reducing energy waste.

The illuminator, sold as a separate accessory, can be easily integrated on the unit's head and is field-installable.

Available with IR850, IR940 or white light.



## ULISSE EVO RADIOMETRIC FUNCTIONS

The integrated thermal camera can identify targets moving in the dark or at distance with extreme accuracy. As well as this, it has radiometric functions that allow precise temperature detection based on the image's 4 main pixels. The device can be configured so that it independently generates a Radiometric Alarm and/or Warning via ONVIF Events on the VMS.

**In camera models with advanced radiometric functions, up to 5 ROIs (Regions of Interest) can be set for each preset position.** The defined ROIs are scaled proportionally to the digital zoom. So, when zooming in the ROI is increased and when zooming out the ROI is decreased. PTZ ROIs are set to preset PAN and TILT positions (not zoom) so they then change in relation to the zoom. In camera models with advanced radiometric functions, thermal cameras offer three temperatures: minimum, average and maximum. Radiometric rules can be linked to exceeding one of these three temperature thresholds.



## ULISSE EVO DUAL VISION

Combining the two cameras has created an effective and powerful surveillance tool. **The visible camera can recognise and identify a target while the thermal camera achieves better detection accuracy, even in total darkness or in extreme weather conditions.**

The non-cooled long-wave thermal sensor (LWIR) with vanadium oxide (VOx) guarantees maximum detection accuracy even in total darkness and in extreme weather conditions. Available in 320x256 or 640x512 resolution with a wide choice of optics to create the optimum configuration for the application.

The visible camera is a SONY FCB-EV7520 with 30x optical zoom and a 1/2.8" Exmor R™ CMOS sensor, Full HD 1080/60p resolution. It is capable of producing impeccable image quality.





## VIDEOTEC ANALYTICS

The video analysis technology, integrated into Videotec cameras, offers an end-to-end solution for preventative detection of intrusions in outdoor monitoring applications of critical infrastructures, industrial sites and perimeters.

Videotec Analytics is the result of more than 10 years of research and design, carried out by a team of R&D professionals, cooperating together with prestigious international universities and research centres.

### THE ADVANTAGES OF VIDEO ANALYTICS

- Maximum preventative anti-intrusion efficiency: every part of the system is designed and automated to allow immediate and preventative actions against any possible threat.
- A reduction in human error and costs.
- Reduced storage space needed: only necessary footage is recorded.
- Optimal external operation in the most critical and complex atmospheric conditions.
- Videotec Analytics enables the geolocation function: GeoMove&Track. This function allows a form of cooperation between two Videotec cameras via an intelligent language to create advanced actions also on the more common video surveillance systems. This function offers the benefit of having a complete, turn-key positioning and tracking solution, guaranteed by Videotec.
- Unbeatable detection performance even at long distances, thanks to the analysis of detail-rich high-definition images.
- Reduced time and effort needed to monitor, detect and search the recordings for anomalous events. The resulting security system is highly efficient, reliable and convenient.

### HOW DOES VIDEOTEC ANALYTICS WORK

Every time there is an alarm, the auto-tracking automatically activates and event metadata is sent to the VMS via the ONVIF protocol. Simultaneously, the security operators are then alerted and recording starts. The camera keeps the moving target at the centre of the frame and zooms in on the target to make recognition easier.

The metadata sent to the VMS system can be used to frame the target with a bounding box for clear identification of the subject or it can be used to activate alarms or begin recording. Bounding boxes are visible on VMS systems that have ONVIF Media 2 Profile (contact Videotec for list of compatible VMS systems).

### RULES

Depending on the rules set, an alarm starts, and the auto-tracking is activated if an object enters, exits, or appears or stops more than allowed in an area.

It is possible to configure up to ten rules per preset.

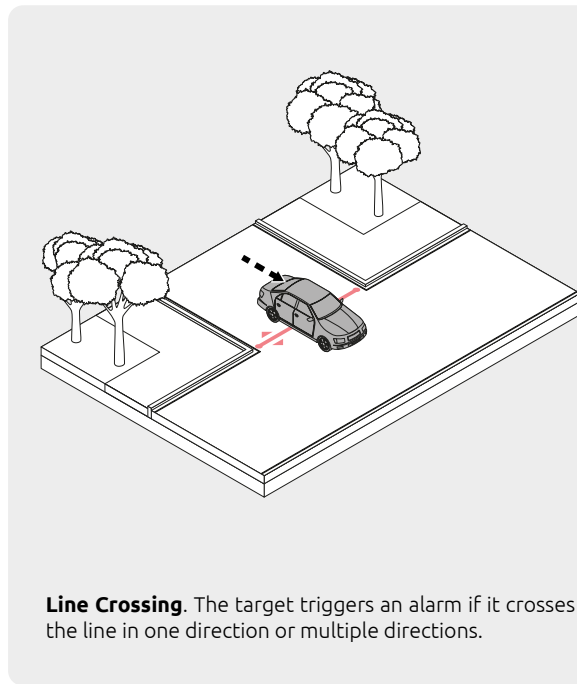
### CALIBRATION

The operator can calibrate the scene's point of view, so it is possible to render the targets in 3D.

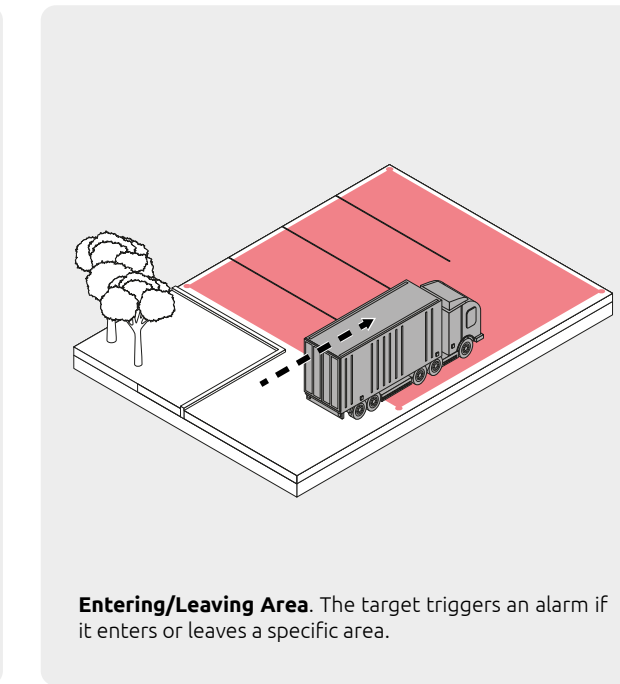
### TARGET CLASSIFICATION

After a simple calibration procedure, targets can be classified into the following categories: generic objects, person, vehicle. Thereby, targets will trigger an alarm based on their size. The result is a drastic reduction of false alarms caused by irrelevant targets.

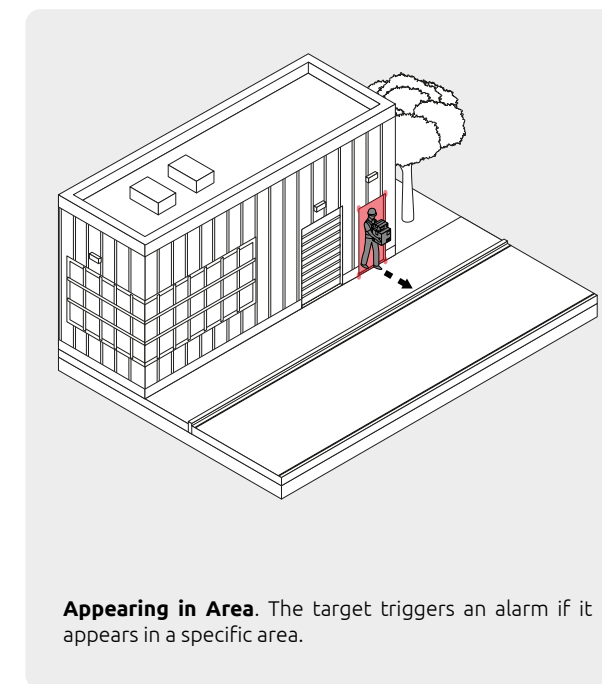
All system calibration and configuration are made via a very intuitive web interface.



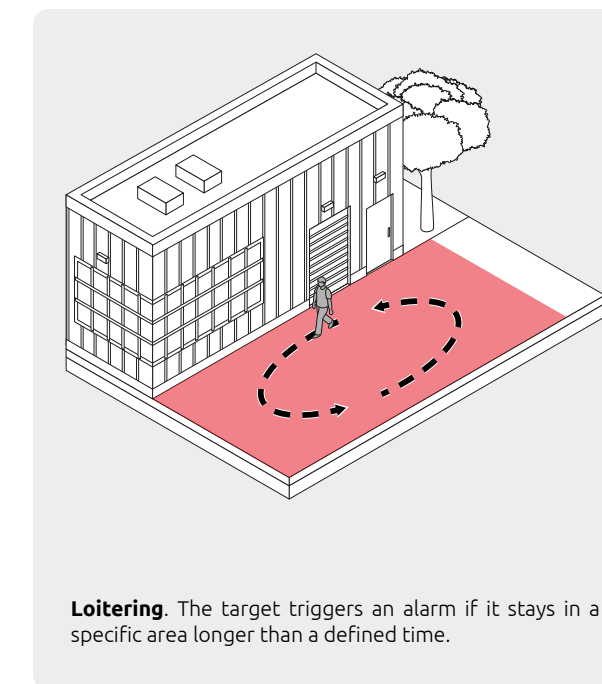
**Line Crossing.** The target triggers an alarm if it crosses the line in one direction or multiple directions.



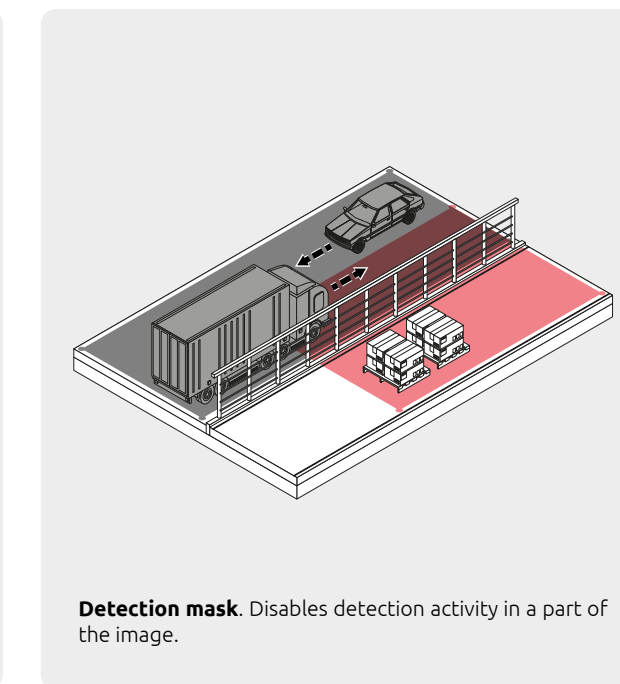
**Entering/Leaving Area.** The target triggers an alarm if it enters or leaves a specific area.



**Appearing in Area.** The target triggers an alarm if it appears in a specific area.



**Loitering.** The target triggers an alarm if it stays in a specific area longer than a defined time.



**Detection mask.** Disables detection activity in a part of the image.



# ULISSE EVO

ULISSE PTZ CAMERAS



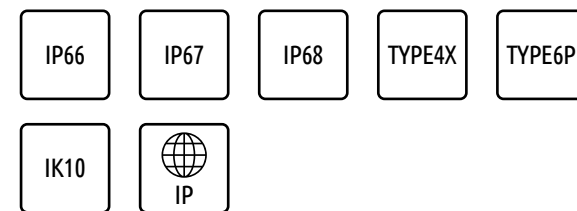
The **ULISSE EVO** is available with an integrated super low-light camera with 30x motorised zoom, with Delux video encoding technology.

Alternatively, the models with Sony FCB-EV7520 camera offer an electronic image stabiliser, advanced HLC technology and dynamic masking of privacy zones.

Models are available with integrated video analysis.

The **ULISSE EVO DUAL** provides two independent videos simultaneously from a high-sensitivity visual camera and a thermal camera.

The **ULISSE EVO THERMAL** versions integrate a thermal camera with radiometric functions. The thermal camera can identify targets moving in the dark or from a distance with extreme accuracy.



## ULISSE EVO

ULISSE PTZ CAMERAS



ULISSE EVO



ULISSE EVO DUAL



ULISSE EVO THERMAL

CAMERA	SONY FCB-EV7520	DELUX TECHNOLOGY	ULISSE EVO DUAL	ULISSE EVO THERMAL
<b>Type of camera</b>	Day/Night camera	Day/Night camera	Day/Night camera + Thermal camera	Thermal camera
<b>Radiometric analysis</b>	-	-	-	✓
<b>Image electronic stabilizer</b>	✓	-	✓	-
<b>Resolution</b>	Day/Night: Full HD (1920x1080)	Day/Night: Full HD (1920x1080)	Day/Night: Full HD (1920x1080) Thermal camera: 720x480 (interpolated resolution)	720x480 (interpolated resolution)
<b>Minimum illumination</b>	Colour: 0.0013lx; (50 IRE, High sensitivity on) B/W: 0.0008lx; (30 IRE, High sensitivity on)	Colour: 0.006lx (F1.6, 30 IRE) B/W: 0.0006lx (F1.6, 30 IRE)	0.0013lx (50 IRE, High sensitivity on) Thermal camera: 720x480 (interpolated resolution)	-
<b>Zoom</b>	30x (360x with digital zoom)	30x (480x with digital zoom)	Thermal camera (digital Zoom): 8x Day/Night: 30x (360x with digital zoom)	2x, 4x (336x256) 2x, 4x, 8x (640x512)
<b>Lens</b>	f= from 4.3mm (wide) up to 129mm (tele), from F1.6 up to F14	f= from 4.5mm (wide) up to 135mm (tele), from F1.6 up to F9.6	Thermal camera: 6.3mm, 9.1mm, 18mm, 25mm, 35mm, 50mm Day/Night: f= from 4.3mm (wide) up to 129mm (tele), from F1.6 up to F14	9mm, 13mm, 19mm, 25mm, 35mm
<b>Privacy zones masking</b>	✓ (dynamic masking)	✓	✓ (dynamic masking)	-
<b>MECHANICAL</b>				
<b>Material</b>	Aluminium and Tecopolymer	Aluminium and Tecopolymer	Aluminium and Tecopolymer	Aluminium and Tecopolymer
<b>Unit weight</b>	7.1kg (15.6lb) (7.4kg (16.3lb) with LED illuminator)	7.1kg (15.6lb) (7.4kg (16.3lb) with LED illuminator)	7.4kg (16.3lb)	7.1kg (15.6lb)
<b>Horizontal rotation</b>	360°, continuous rotation	360°, continuous rotation	360°, continuous rotation	360°, continuous rotation
<b>Vertical rotation</b>	From -90° up to +90°	From -90° up to +90°	From -90° up to +90°	From -90° up to +90°
<b>Horizontal speed (variable)</b>	From 0.02°/s up to 250°/s	From 0.02°/s up to 250°/s	From 0.02°/s up to 250°/s	From 0.02°/s up to 250°/s
<b>Tilt speed (variable)</b>	From 0.1°/s up to 250°/s	From 0.1°/s up to 250°/s	From 0.1°/s up to 250°/s	From 0.1°/s up to 250°/s
<b>ELECTRICAL</b>				
<b>Supply voltage/current consumption</b>	24Vac, 5A, 50/60Hz 24Vdc, 5A PoE 90W	24Vac, 5A, 50/60Hz 24Vdc, 5A PoE 90W	24Vac, 5A, 50/60Hz 24Vdc, 5A PoE 90W (complies with standard IEEE802.3bt CLASS 8)	24Vac, 5A, 50/60Hz 24Vdc, 5A PoE 90W
<b>Power consumption</b>	57W max (peak on switch-on, heating switched on, de-icing function)	57W max (peak on switch-on, heating switched on, de-icing function)	57W max (peak on switch-on, heating switched on, de-icing function)	57W max (peak on switch-on, heating switched on, de-icing function)
<b>SOFTWARE</b>				
<b>Communication protocol</b>	ONVIF, Profile Q, Profile S and Profile T	ONVIF, Profile Q, Profile S and Profile T	ONVIF, Profile Q, Profile S and Profile T	ONVIF, Profile Q, Profile S and Profile T
<b>Video compression</b>	H.264/AVC, MJPEG, MPEG4, snapshot JPEG	H.264/AVC, MJPEG, MPEG4, snapshot JPEG	H.264/AVC, MJPEG, MPEG4, snapshot JPEG	H.264/AVC, MJPEG, MPEG4, snapshot JPEG
<b>Video analytics</b>	✓	✓	✓	-
<b>ENVIRONMENT</b>				
<b>Operating temperature</b>	From -40°C (-40°F) up to +65°C (149°F) (continuous working)	From -40°C (-40°F) up to +65°C (149°F) (continuous working)	From -40°C (-40°F) up to +65°C (149°F) (continuous working)	From -40°C (-40°F) up to +65°C (149°F) (continuous working)
<b>Compliance to railway applications</b>	✓	✓	✓	✓

## ACCESSORIES



**SURGEPR**  
**LIGHTNING SURGE PROTECTOR DEVICE**  
• For railway application (in compliance with EN50121-4)



**UEI**  
**ILLUMINATOR FOR ULISSE EVO**  
• Wavelengths: 850nm, 940nm, white light  
• Colours: RAL 9002, RAL 9005



**OHEP90INJ**  
**PoE (90w) Power Injector with one channel**  
• For installation indoors (OHEP90INJ)  
• For installation outdoor(OHEP90INJO)



**FM1010**  
**EMC FILTER FOR MARINE CERTIFICATION**  
• The filter must be connected to the power line of the equipment  
• The filter is not explosion-proof certified  
• Implement adequate protection if used in potentially explosive classified environments (e.g. Atex)  
• Electrical data: from 0 up to 250V DC/AC 50/60 Hz, 6A



**COMB**  
**COMMUNICATION BOX IN POLYCARBONATE**  
• Designed to work exclusively with Videotec products and accessories  
• 1 SFP port, MSA compliant, Fast Ethernet (100BASE-FX), for fiber optic connection (splice tray included in the product)  
• 3 RJ45 ports, Fast Ethernet (10BASE-T/100BASE-T)  
• 2 bypass for analog video signals with BNC connectors and 2 bypass for I/O signals with multi-pin connectors  
• Extended/Industrial range electronics



**WASPT**  
**WASHER PUMP AND 5 OR 23 LITER TANK**  
• Polyethylene tank with stainless steel cage  
• Delivery head: 5m (16ft), 11m (36ft) or 30m (98ft)  
• Versions with alarm for the lack of liquid in the tank  
• Also for third-party products  
• Operating temperature: from -10°C (14°F) up to +60°C (140°F)  
• Available voltages: 230Vac, 120Vac, 24Vac



**WASNX**  
**WASHER PUMP WITH SOLENOID VALVE FOR STAINLESS STEEL PRODUCTS**  
• Enclosure made of stainless steel AISI 316L  
• Delivery head: up to 30m (98ft)  
• Water tank capacity: 10l (2.6gal)  
• Suitable for Videotec products or with third-party products  
• Operating temperature from -20°C (-4°F) up to +60°C (140°F)  
• Available voltages: 230Vac, 120Vac, 24Vac

## ULISSE CAMERAS BRACKETS



**UEBP0**  
**PARAPET BRACKET WITH INTERNAL CABLE CHANNEL FOR ULISSE EVO**  
• Standard colours: RAL9002 (UEBP0AA), RAL9005 (UEBP0FA)



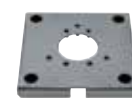
**UEBP4**  
**PARAPET BRACKET WITH QUICK CONNECTORS FOR ULISSE EVO**  
• RJ45 (Ethernet and PoE)+4 poles with screw terminal (power supply and I/O)



**UEBP7**  
**PARAPET BRACKET WITH QUICK CONNECTORS FOR ULISSE EVO**  
• RJ45 (Ethernet and PoE)+7 poles with screw terminal (power supply and I/O)



**UEBW**  
**WALL ASSEMBLY SUPPORT FOR ULISSE EVO**  
• Standard colours: RAL9002 (UEBWAA), RAL9005 (UEBWFA)



**UEAW**  
**COUNTER-PLATE**  
• AISI 316L electropolished stainless steel  
• Dimensions: 200x200mm (7.9x7.9in)



**UEAP**  
**POLE MOUNT ADAPTOR**  
• Made of AISI 316L electropolished stainless steel  
• For pole diameters: from 60mm (2.36in) up to 200mm (7.9in)  
• Dimensions: 121x85mm (4.7x3.3in)



**UEAC**  
**CORNER MOUNT ADAPTOR**  
• AISI 316L electropolished stainless steel  
• Dimensions: 120x220mm (4.7x8.7in)





**ITALY HEADQUARTERS**

**VIDEOTEC S.p.A**

36015 Schio (VI) - Italy  
Via Friuli, 6 - I  
T. +39 0445 697411  
F. +39 0445 697414  
info@videotec.com

**FRANCE**

**VIDEOTEC FRANCE SARL**

Immeuble Le Montreal,  
19bis Avenue du Québec,  
ZA de Courtaboeuf  
91140 Villebon sur Yvette - France  
T. +33 1 60491816  
F. +33 1 69284736  
info.fr@videotec.com

**AMERICAS**

**VIDEOTEC SECURITY, Inc.**

Gateway Industrial Park,  
35 Gateway Drive,  
Suite 100 Plattsburgh,  
NY 12901 - U.S.A.  
T. +1 518 825 0020  
F. +1 518 825 0022  
info.usa@videotec.com

**ASIA PACIFIC**

**VIDEOTEC (HK) Ltd**

Flat 8, 19/F.  
On Dak Industrial Building,  
No. 2-6 Wah Sing Street Kwai Chung,  
New Territories - Hong Kong  
T. +852 2333 0601  
F. +852 2311 0026  
info.hk@videotec.com

